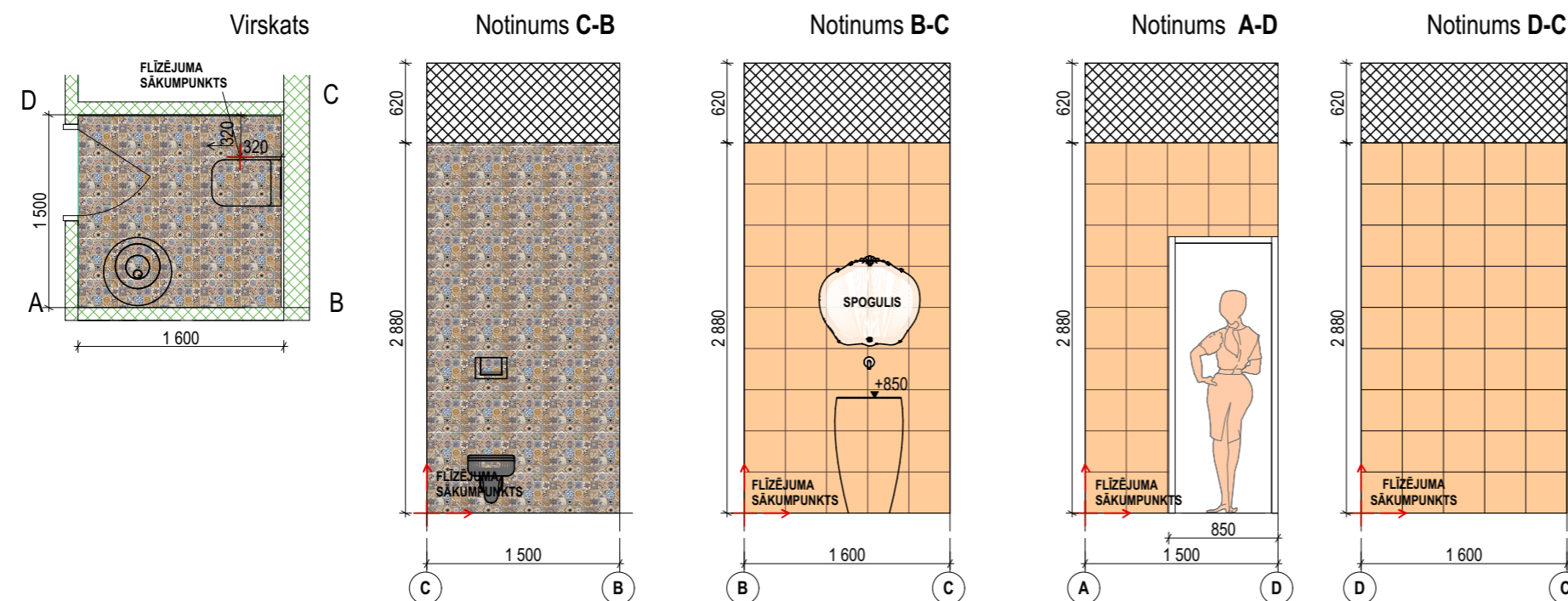
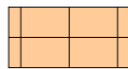

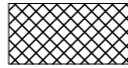

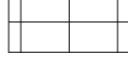
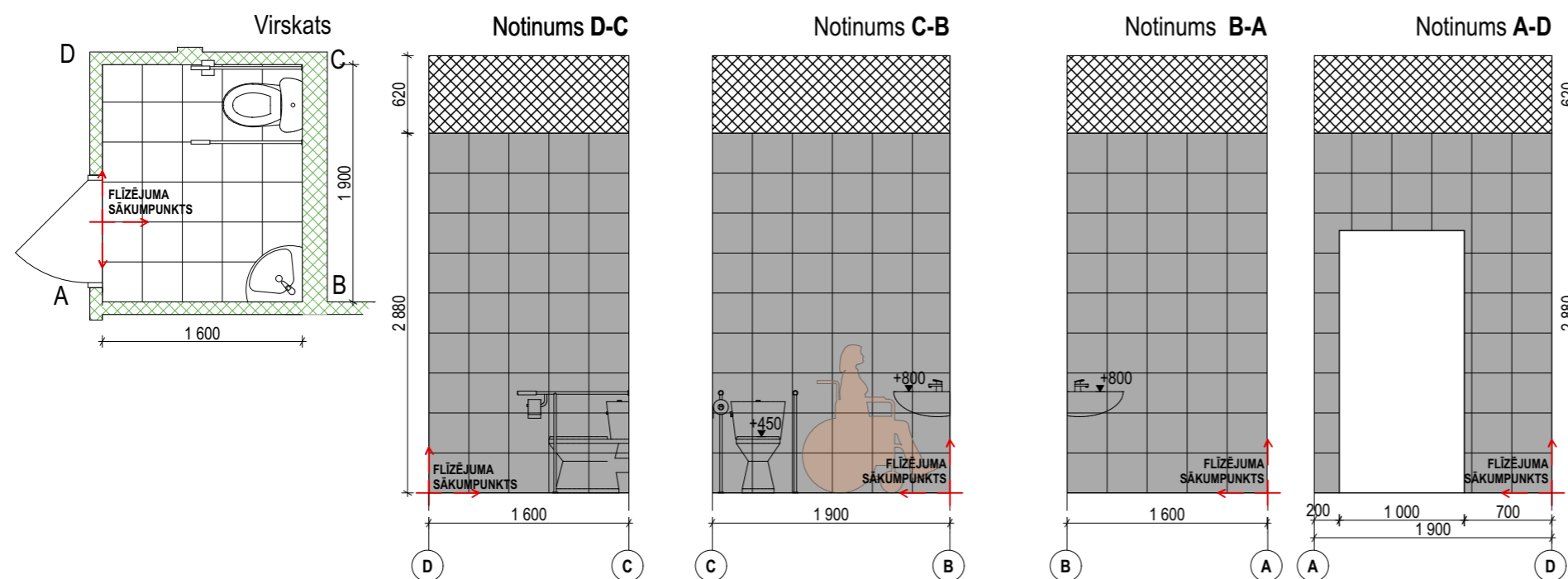


## DŽEZA KLUBA FLĪŽU IZKLĀJUMI M1:50



- APZĪMĒJUMI**
-  Flīzes 'Avila Coto' 316 x 316 mm (11.95m<sup>2</sup>)  
Šuve 'Kerapoxy CQ 160' aizpilde 2 mm
  -  Flīzes 'Arenal Dec' 316 x 316 mm (6.70 m<sup>2</sup>)  
Šuve 'Kerapoxy CQ 160' aizpilde 2 mm
  -  Ģipškartona griesti, pazemināti par 620 mm
  -  Flīzes 'Porti Grey' 320 x 320 mm (18.05m<sup>2</sup>)  
Šuve 'Kerapoxy CQ 131' aizpilde 2 mm
  -  Flīzes 'Porti White 320 x 320 mm (3.05m<sup>2</sup>)  
Šuve 'Kerapoxy CQ 131' aizpilde 2 mm



### PIEZĪMES

- 5.sanmezgla flīzējumu veikt pēc tādas pašas shēmas
- 3.sanmezglā durvis bez sliekšņa.

